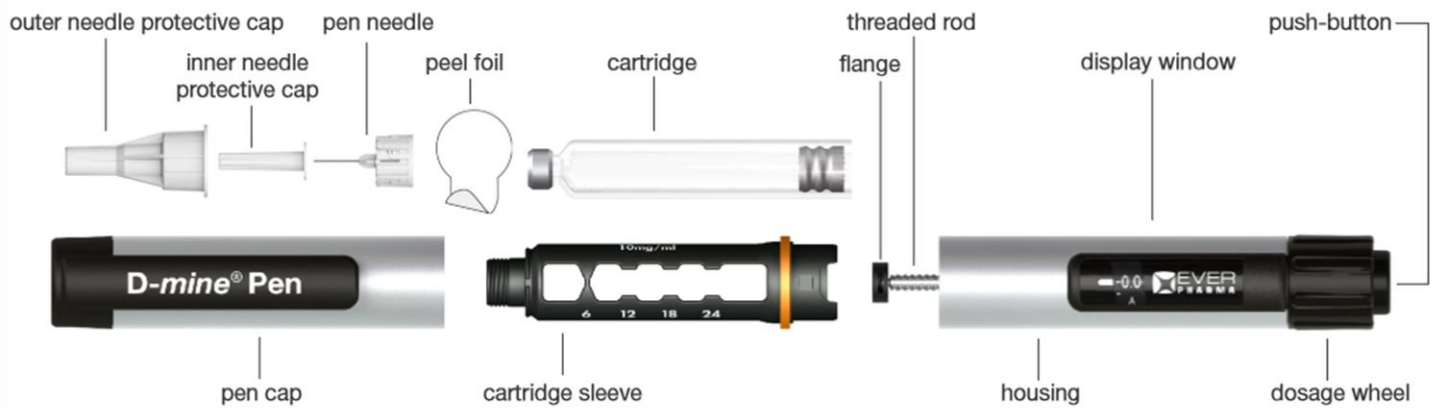


This brochure contains instructions for using the EVER Pharmaceuticals D-mine[®] Pen injector and disposables.

It is not intended to replace the instructions for use of the pen.

- Your Dacepton[®] dose will be determined at a response test by your specialist
- Your D-mine[®] Pen can deliver doses from 0.5 to 6.0 mg, in increments of 0.5 mg
- It is designed to be used with Dacepton[®] 3 ml cartridges (Apomorphine 10 mg/ml) supplied by EVER Pharmaceuticals and appropriate pen needles
- **Compatible pen needle example:** BD Micro-Fine Ultra™ needles OR NovoFine[®] needles, 29 - 31 gauge and 5 - 12.7 mm length (Other needles may be compatible, please check with your nurse or pharmacist)
- Before using the D-mine[®] Pen wash your hands
- Ensure the skin where you intend to inject is clean
- **Injection site examples:** inject into sites such as your abdomen or your outer thighs as shown by your doctor or nurse
- Change your injection site each time you use the D-mine[®] Pen
- Do not inject into an area of skin that is sore, red, infected or damaged
- Never inject yourself directly into a vein (intravenously) or muscle (intramuscularly).
- **Please refer to the package leaflet of the pharmaceutical product**

DESCRIPTION OF PARTS OF D-mine[®] PEN THERAPY



**Injection
Dose:**

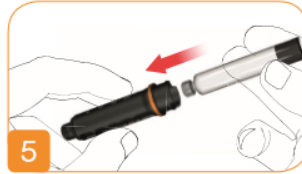
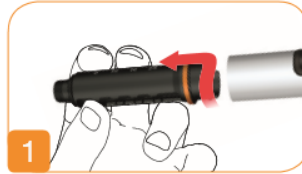
mg

The D-mine[®] Pen is a reusable injection device to be used in conjunction with Dacepton[®] (Apomorphine) Cartridges. **A new cartridge can be used for up to 15 days from the time of the first injection**

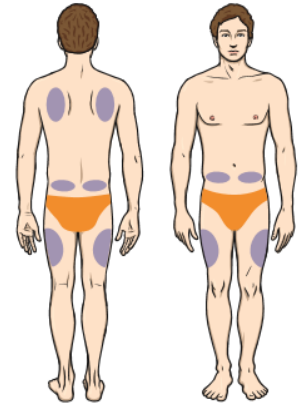
The medication contained in the cartridges is a clear liquid. Do NOT use if the medication if the liquid has turned green, cloudy or has any visible particles in it

CHANGING THE D-mine[®] CARTRIDGE

1. Twist the cartridge sleeve anti-clockwise until you hear a click
2. Remove the cartridge sleeve from housing
3. Leave the rod extended
4. Remove and dispose of the empty glass cartridge ensuring you retain the cartridge sleeve
5. Insert new cartridge into cartridge sleeve
6. Reconnect the Cartridge sleeve to the housing (this will push the threaded rod into the housing)
7. Twist the cartridge sleeve onto the housing clockwise until you hear a click



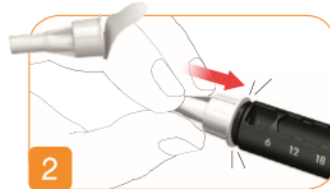
You may use the following injection sites:



Ensure you rotate injection sites for each injection.
Massage is helpful to reduce skin irritation

ATTACHING THE NEEDLE & SETTING THE DOSE

1. Pull off the peel foil from the PEN needle
2. Push and screw the needle onto the cartridge sleeve clockwise until it is on firmly



3. Set the dose by turning the dosage wheel clockwise until the prescribed dose is visible in the display window
4. You may correct or reduce the dose by turning the dosage wheel anti-clockwise



PREPARING AND GIVING THE INJECTION

Note: you can interrupt the injection by releasing the push-button. The remaining amount of medicine not delivered can be seen on the display and can be injected by pressing the push button again
Note: Use the injection technique as recommended by your physician and/or health care professional

3. Once the needle has been inserted into the skin press the button in fully for injection. Keep the push button held down during medication discharge. The PEN will click while the medication is discharging
4. Keep the needle in the skin for a further 6 seconds after the medication has been discharged.
5. Check that the PEN is fully discharged. The display window position shows 0.0
6. Place the outer PEN needle shield in the notch located in your carry case to dispose of the needle correctly and safely

1. Once the dose is set remove the PEN cap and the outer and inner needle protective cap
2. Keep the outer needle protective cap to safely remove and dispose of the PEN needle after use



For support related to your Dacepton[®] therapy call the D-mine[®] Care support line on 0800 254 0175 or email dminecare.uk@everpharma.com

For technical support for your D-mine[®] equipment please call 0800 254 0175 24 Hours a day* or email info.uk@everpharma.com

Any side effects or device malfunction should be reported to your doctor, pharmacist or nurse. You can also report side effects directly via the Yellow Card Scheme at www.mhra.gov.uk/yellowcard. Adverse events should also be reported to Medical Information on 0800 254 0174 or info.uk@everpharma.com By reporting side effects, you can help provide more information on the safety of this medicine.

*At busy times, out of hours and weekends there may be a callback service